

STANDARD DEPARTURE  
CHART - INSTRUMENT

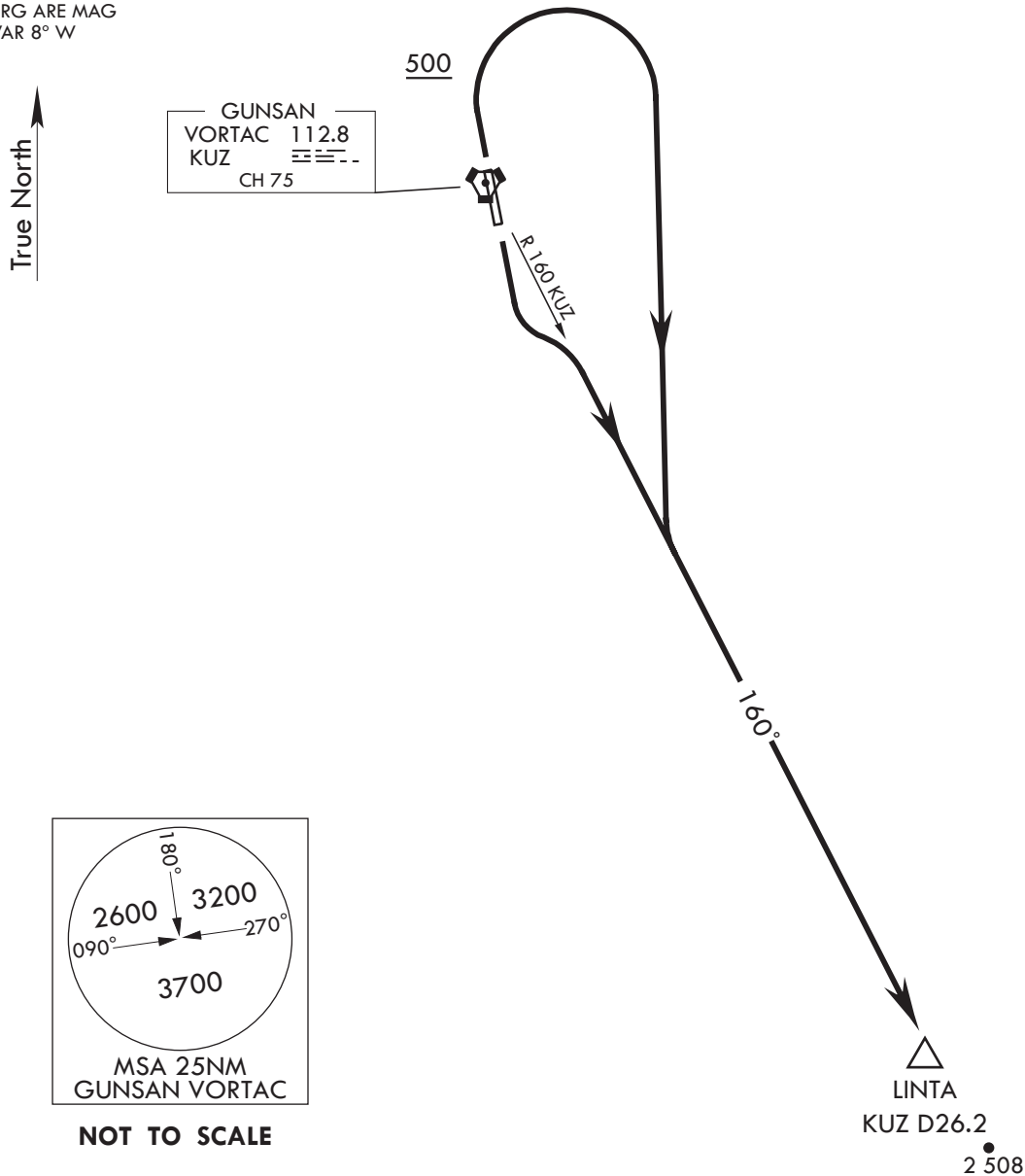
TRANSITION ALT	14 000
TRANSITION LVL	FL 140

GUNSAN DEP	124.1
	293.525
GUNSAN TWR	126.5
	292.3

GUNSAN/Gunsan(RKJK)  
RWY 18/36  
LINTA 1

Note : Departure under U.S. TERPS.

ELEV, ALT IN FEET  
DIST IN NM  
BRG ARE MAG  
VAR 8° W



DEPARTURE ROUTE DESCRIPTION

TAKE-OFF RWY 18 :

Turn left to intercept the R 160 KUZ direct LINTA(R 160 KUZ/D26.2).  
Maintain ATC assigned altitude.

TAKE-OFF RWY 36 :

Climb to 500 ft on R 360 KUZ, then climbing right turn to intercept the R 160 KUZ direct LINTA(R 160 KUZ/D26.2). Maintain ATC assigned altitude.

Change : Amended name of aerodrome.

**INTENTIONALLY**

**LEFT**

**BLANK**

STANDARD DEPARTURE  
CHART - INSTRUMENT

TRANSITION ALT 14 000  
TRANSITION LVL FL 140

GUNSAN DEP 124.1  
293.525  
GUNSAN TWR 126.5  
292.3

GUNSAN/Gunsan(RKJK)  
RWY 18/36  
ENTEL 1

Note : Departure under U.S. TERPS.

ELEV, ALT IN FEET  
DIST IN NM  
BRG ARE MAG  
VAR 8° W

RWY	Knots	60	120	180	240
*18	V/V(fpm)	219	438	657	876
*36	V/V(fpm)	235	470	705	940

\* Minimum climb rate to 7 000 ft.

2 281

KUZ D30  
7 000

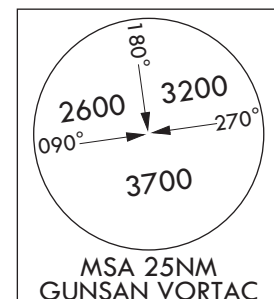
ENTEL  
KUZ D33

True North

GUNSAN  
VORTAC 112.8  
KUZ  
CH 75

500

R 037 KUZ



DEPARTURE ROUTE DESCRIPTION

TAKE-OFF RWY 18 :

Turn left to intercept the R 037 KUZ direct ENTEL. Cross KUZ 30 DME at or above 7 000 ft. Maintain ATC assigned altitude.

TAKE-OFF RWY 36 :

Climb to 500 ft, then climbing right turn to intercept the R 037 KUZ direct ENTEL. Cross KUZ 30 DME at or above 7 000 ft. Maintain ATC assigned altitude.

Change : Amended name of aerodrome.

**INTENTIONALLY**

**LEFT**

**BLANK**

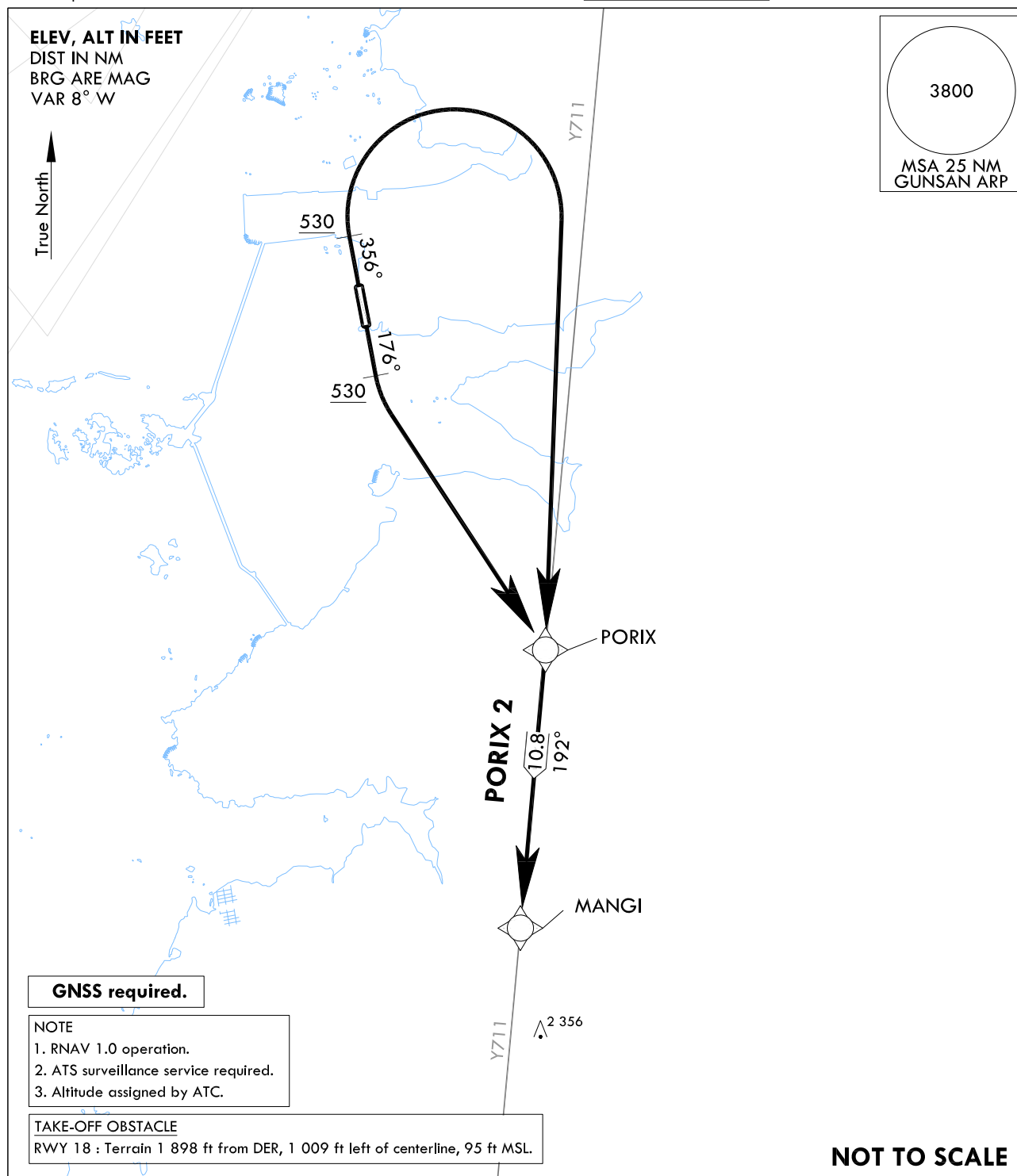
**STANDARD DEPARTURE  
CHART - INSTRUMENT**

TRANSITION ALT 14 000  
TRANSITION LVL FL 140

GUNSAN DEP 124.1  
293.525  
GUNSAN TWR 126.5  
292.3

**GUNSAN/Gusan(RKJK)**  
**RWY 18/36**  
**RNAV PORIX 2**

Note : Departure under U.S. TERPS.



**DEPARTURE ROUTE DESCRIPTION**

TAKE-OFF RWY 18 : Climbing left turn direct PORIX thence,.....

TAKE-OFF RWY 36 : Climbing right turn direct PORIX thence,.....

MANGI Transition : From PORIX track 192° to MANGI.

Change : Establishment of standard instrument departure procedure for RWY 18/36(RNAV PORIX 2).

Standard Instrument Departure Procedure Coding Tables

RNAV PORIX 2 - MANGI Transition										
Serial Number	Path Descriptor	Waypoint Identifier	Fly-over	Course/Track °M(°T)	Distance (NM)	Turn direction	Altitude (ft)	Speed (kt)	Coordinates	VPA/RDH
001	CA	-	-	18-176(167.9) 36-356(347.9)	-	-	+530	-	-	RNAV 1
002	DF	PORIX	-	-	-	-	-	-	35°40'57.0"N 126°45'41.0"E	RNAV 1
003	TF	MANGI	-	192(183.9)	10.8	-	-	-	35°30'11.3"N 126°44'31.7"E	RNAV 1
										Remarks
										-
										-
										-

Change : Establishment of standard instrument departure procedure for RWY 18/36(RNAV PORIX 2).